



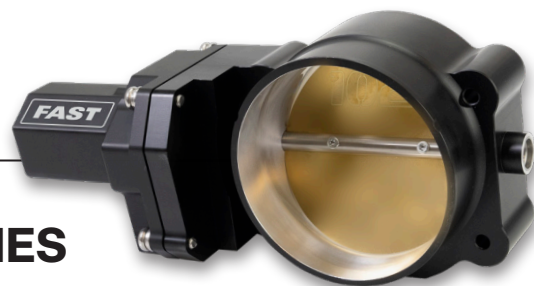
LSXHR™ INTAKE MANIFOLD INTERCOOLER FOR LS ENGINES #148000

The LSXHR Intercooler is a perfect solution to cool the air charge on an LS-based centrifugal-supercharged or turbocharged engine using one of the popular high-ram style intake manifolds such as the FAST LSXHR composite manifold. This air-to-water intercooler conveniently fits between the upper and lower intake manifold, simplifying the installation, while saving space, time, and cost. Testing conducted on a 1350 HP/20 psi turbocharged-LSX application showed a 198°F drop in temperature and less than 1 psi loss across the intercooler.

Features & Benefits:

- Convenient placement minimizes underhood piping fabrication
- Large -16AN water inlet/outlets
- Welded billet construction
- O-ring sealing on both air and water sections
- Necessary hardware included
- Durable black powdercoat finish
- Designed to work with the LSXHR 103 mm intake manifold

Description	Part No.
LSXHR Intake Manifold Intercooler	148000



BIG MOUTH™ 102 MM ELECTRONIC THROTTLE BODY FOR GM LS ENGINES #54104

The FAST Big Mouth 102 mm Electronic Throttle Body is available for GM LS drive-by-wire applications, providing a huge airflow increase over OEM, while maintaining stock idle characteristics.

Features & Benefits:

- Engineered in-house utilizing aftermarket components
- Works with most stock Gen IV LS ECUs including, but not limited to, L76, L77, L99, LS3, or LS7
- Compatible with Edelbrock Pro-Flo 4+® or any aftermarket EFI system designed to control an LS-style electronic throttle body
- High-performance, high-torque electric motor for quicker response

Description	Part No.
Big Mouth 102 mm Electronic Throttle Body For GM LS Engines	54104