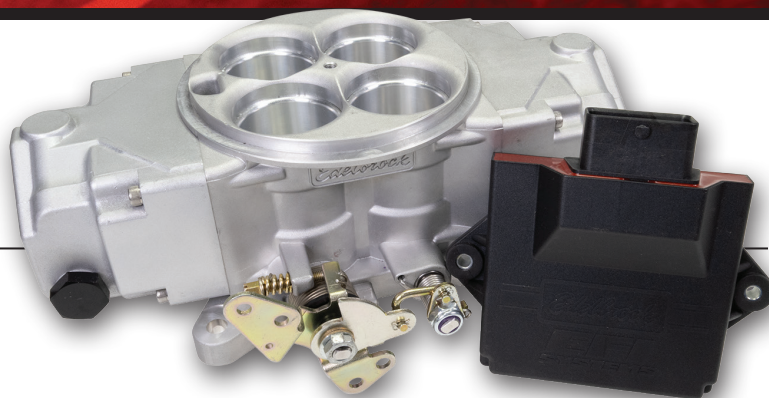


# Edelbrock

## EZ-STREET™ EFI

THROTTLE BODY INJECTION

### EZ-STREET™ EFI SYSTEM #30700



Engineered to provide an affordable and user-friendly upgrade for any V8 engine originally equipped with a carburetor, the EZ-Street EFI system seamlessly integrates cutting-edge technology with traditional styling. The four-barrel throttle body design mounts to any intake manifold with a standard 4150-style flange and accepts a traditional round air cleaner, giving builders a cosmetically appealing appearance that mimics a classic carburetor. Each unit arrives fully preassembled and pressure-tested, complete with integrated injectors, throttle position and manifold sensors, fuel rails, linkage, and a Bosch 4.9 wideband oxygen sensor. It also includes an ECU, high-quality wiring harness, and detailed installation instructions.

At its core, the EZ-Street EFI system features closed-loop, self-learning fuel technology that removes the guesswork from tuning. A calibration wizard makes initial startup simple, eliminating the need for custom tuning or a laptop. The included EZ-Street Bluetooth Tuner App, available for both iOS and Android, allows users to configure the system, adjust settings, and monitor performance through intuitive preprogrammed dashboards. Data logging, fuel control, and dual electric fan management are all accessible directly from a smartphone or tablet, making this one of the easiest EFI systems to set up and operate.

Beyond fuel delivery, the EZ-Street EFI offers fully programmable ignition control, when paired with a Pro-Flo distributor (available separately), enabling optimized performance and improved fuel efficiency. With an internal coil driver and compatibility across most HEI distributors, ready-to-run distributors, and CDI boxes, the system eliminates the need for separate ignition modules.

Capable of supporting up to 650 horsepower, the EZ-Street EFI system combines advanced annular-fuel-venturi distribution with modern CAN communication protocols to provide reliable, high-performance results in a simplified package.

With its blend of modern fuel injection technology, easy installation, and classic carburetor styling, the EZ-Street EFI system represents the next step in affordable performance upgrades for both street and strip enthusiasts.

#### Features & Benefits:

- Self-tuning - no laptop required
- Simple 4-wire hookup
- Ready to run right out of the box with preloaded calibrations
- Compatible with most HEI distributors, ready-to-run distributors, and CDI boxes
- Supports up to 650 HP
- EZ-Street Bluetooth tuner app available for free on Android and iOS
- Integrated injectors, TPS, TMAP sensor, and CTS sensors
- CAN communication
- Cosmetically appealing – looks like a traditional carburetor

Description	Part No.
Edelbrock EZ-Street Fuel Injection	30700

